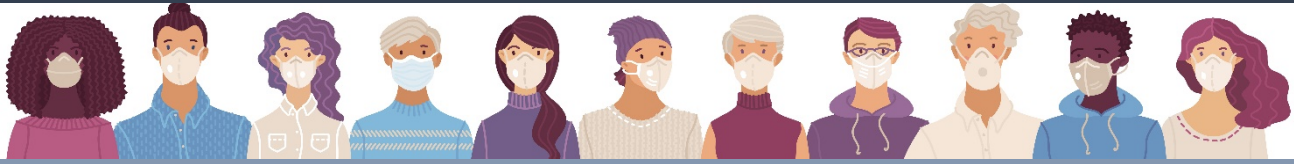


# COVID-19 Vaccination Strategy

The COVID-19 vaccine will be distributed in a phased approach. Phase 1A began in December 2020. Phase 1B was authorized to begin on January 11, 2021, and 1C will be prioritized in early 2021. Phase 2 can expect to be eligible by mid-2021.



## Phase 1A: Healthcare and Long-term Care Residents

1A Priority One: Health care workers

1A Priority Two: Staff and those residing in Long-term Care Facilities

1A Priority Three: All other direct and indirect care workers (e.g. dentists, urgent care, outpatient)



**HEALTH**  
DEPARTMENT  
*Caring today for a healthy tomorrow*

## Phase 1B: Frontline Essential Workers & Adults 65+

This includes: Those age 65 and older, First responders, School and childcare staff, Corrections staff  
Other frontline essential workers. Information will be updated when additional frontline essential workers become eligible during this phase

## Phase 1C: Other Essential Workers and High-risk Population

This includes: Individuals 16-64 years of age with underlying medical conditions with high-risk medical conditions and all remaining essential workers.

## Phase 2: Individuals 16-18 years or older (based on manufacture's recommendations)

This includes: All individuals who did not otherwise fit into an earlier group for whom the vaccine is recommended.

## When will the COVID-19 Vaccine be available to you?



The Kent County Health Department is following the eligibility criteria for vaccine distribution phases and priority groups set forth by the MDHHS. It cannot interpret the eligibility criteria beyond what is listed in the MDHHS guidance and at [www.vaccinatewestmi.com](http://www.vaccinatewestmi.com).

The KCHD is glad so many residents want to get the vaccine. We remain dedicated to providing up-to-date information on [www.vaccinatewestmi.com](http://www.vaccinatewestmi.com). You can also sign-up to receive updates on the website. However, please know this sign-up is for notification and informational purposes only. Receiving notification is not a determination of vaccine eligibility and availability.

To register for an appointment, visit [wmvaccineclinic.org](http://wmvaccineclinic.org) or call 833-755-0696

Kent County Health Department Website <https://www.accesskent.com/Health/coronavirus.htm>